



K-Othrine[®]
EC 15

DISCLAIMER: ALTHOUGH THIS PRODUCT HAS BEEN EXTENSIVELY TESTED UNDER A LARGE VARIETY OF CONDITIONS, FAILURE THEREOF MAY ENSUE AS A RESULT OF A WIDE RANGE OF REASONS. IF THIS IS SUSPECTED, KINDLY NOTIFY THE REGISTRATION HOLDER.

WARNINGS: May cause transient irritation of the skin, nasal membrane and eyes. Handle concentrate with care. Poisonous when swallowed or inhaled. Keep out of reach of children, uninformed persons and animals. Toxic to fish, bees and wildlife. Store in a cool place away from food and feedstuffs. Do not apply onto pets. **FLAMMABLE** - do not store near open flame or sparks.

PRECAUTIONS: Do not inhale spraymist. Wear protective clothing when handling the concentrate or dilutions. Wear a face shield when applying the diluted washes to surfaces or when working in spray mist. Avoid skin contact and wash splashes from skin or eyes immediately. Wash with soap and water after use. Wash contaminated clothing daily. Do not use in the presence of persons with known sensitivity of pyrethroids. In the case of signs of sensitivity, obtain medical advice. Do not eat, drink or smoke whilst mixing or applying or before washing face and hands. Do not spray directly onto foodstuffs or surfaces on which food is stored, processed or eaten. Prevent contamination of food, feedstuffs, drinking water, eating utensils and food preparation equipment. Remove or cover aquaria, food and drinking water. Remove pets during application. Rinse empty container three times with a volume of water equal to a minimum of 10 % of that of the container. Add the rinsings to the contents of the spray tank before destroying the container. Destroy empty container and do not re-use for any other purpose.

SYMPTOMS OF HUMAN POISONING:

Local: Skin and eye paraesthesia which may be severe, usually transient with resolution within 24 hours. Eye and mucous membrane irritation, cough.

Systemic: Discomfort in the chest, tachycardia, hypotension, nausea, abdominal pain, diarrhoea, vomiting, dizziness, blurred vision, headache, anorexia, somnolence, coma, convulsions, tremors, prostration.

FIRST-AID TREATMENT:

General advice: Remove contaminated, soaked clothing immediately and dispose of safely.

Inhalation: Move the patient to fresh air and keep at rest. If symptoms persist, call a physician.

Skin contact: Take off all contaminated clothing immediately. Wash off immediately with soap and plenty of water for at least 15 min. In case of skin irritation, application of oils or lotions containing Vitamin E may be considered. If symptoms persist, call a physician.

Eye contact: Rinse immediately with plenty of water, also under the eyelids, for at least 15 minutes. Remove contact lenses, if present, after the first 5 minutes, then continue rinsing eye. Get medical attention if irritation develops and persists.

Ingestion: Rinse out mouth and give water in small sips to drink. Do **NOT** induce vomiting. Risk of product entering the lungs on vomiting after ingestion. If swallowed, seek medical advice immediately and show this container or label.

NOTE TO PHYSICIAN:

Risks: This product/preparation contains a pyrethroid. Must NOT be confused with organophosphorus compounds! Risk of product entering the lungs on vomiting after ingestion.

Treatment:

Local treatment: Initial treatment should be symptomatic and supportive.

Systemic treatment: Initial treatment: symptomatic. Gastric lavage should be considered in cases of significant ingestions within the first 2 hours. However, the application of activated charcoal and sodium sulphate is always advisable. Keep respiratory tract clear. Give oxygen or artificial respiration if needed. In case of convulsions, a benzodiazepine (e.g. diazepam) should be given according to standard regimens. If not effective, phenobarbital may be used. Contraindication: atropine. Contraindication: derivatives of adrenaline. There is no specific antidote. Recovery is spontaneous and without sequelae.

DIRECTIONS FOR USE: USE ONLY AS DIRECTED.

Application: **K-Othrine[®] EC 15** should be diluted with water only and applied with any sprayer suitable for producing a coarse droplet spray.

1. **Ants, bedbugs and German cockroaches:** Apply as a direct contact spray using a dilution of 50 ml / 5 l. Spray should be directed at insect harbours and where insect activity is noted.
2. **Fleas:** Apply as a coarse spray at the rate of 100 ml / 5 l / 100 m² to carpets, skirting, walls, cupboards, as well as all areas frequented by pets. For more effective results vacuum carpets prior to treatment and not for 4 days after treatment. Regular treatment of pets using proprietary products is also recommended.
3. **Skin and hide beetles:** Apply as a coarse spray at the rate of 100 ml / 5 l paying particular attention to the flesh side of the hides.

For any **product enquiry**, contact Bayer Environmental Science: +27 (0) 11 921 5911 (Office hours 9am - 5pm). For **poisoning emergencies only**, contact Griffon Poison Information Centre: +27 (0) 82 446 8946.

© Bayer (Pty.) Ltd. All unauthorized reproduction of this label is forbidden.
www.environmentalscience.bayer.co.za

Batch no.: See container
Date manufactured: See container



Bayer



K-Othrine[®]
EC 15

INSECTICIDE

IRAC INSECTICIDE GROUP CODE 1A

Reg. No. L5411 Act No. 36 of 1947
Namibian Reg. No. N-AR 0422

Before using this product read the label carefully.

An emulsifiable concentrate providing rapid flushout and knockdown in the control of German cockroaches, bedbugs, ants and fleas in domestic and industrial premises (including food handling and processing establishments). Also controls skin- and hide beetles.

ACTIVE INGREDIENT:

Deltamethrin (pyrethroid)..... 15 g/l

REGISTRATION HOLDER:

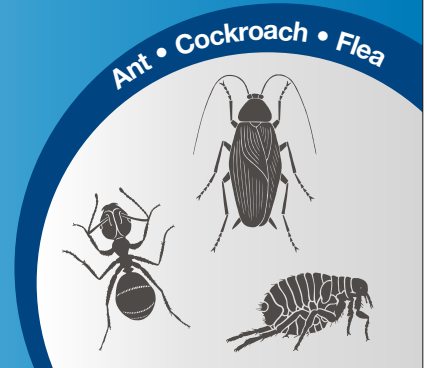
Bayer (Pty.) Ltd. Reg. No. 1968/011192/07
P.O. Box 143, ISANDO 1600, SOUTH AFRICA
TEL: (011) 921 5911

K-OTHRINE[®] is a registered trademark of the Bayer Group.

UN No. 393

11

84940275C / 1119



CAUTION

